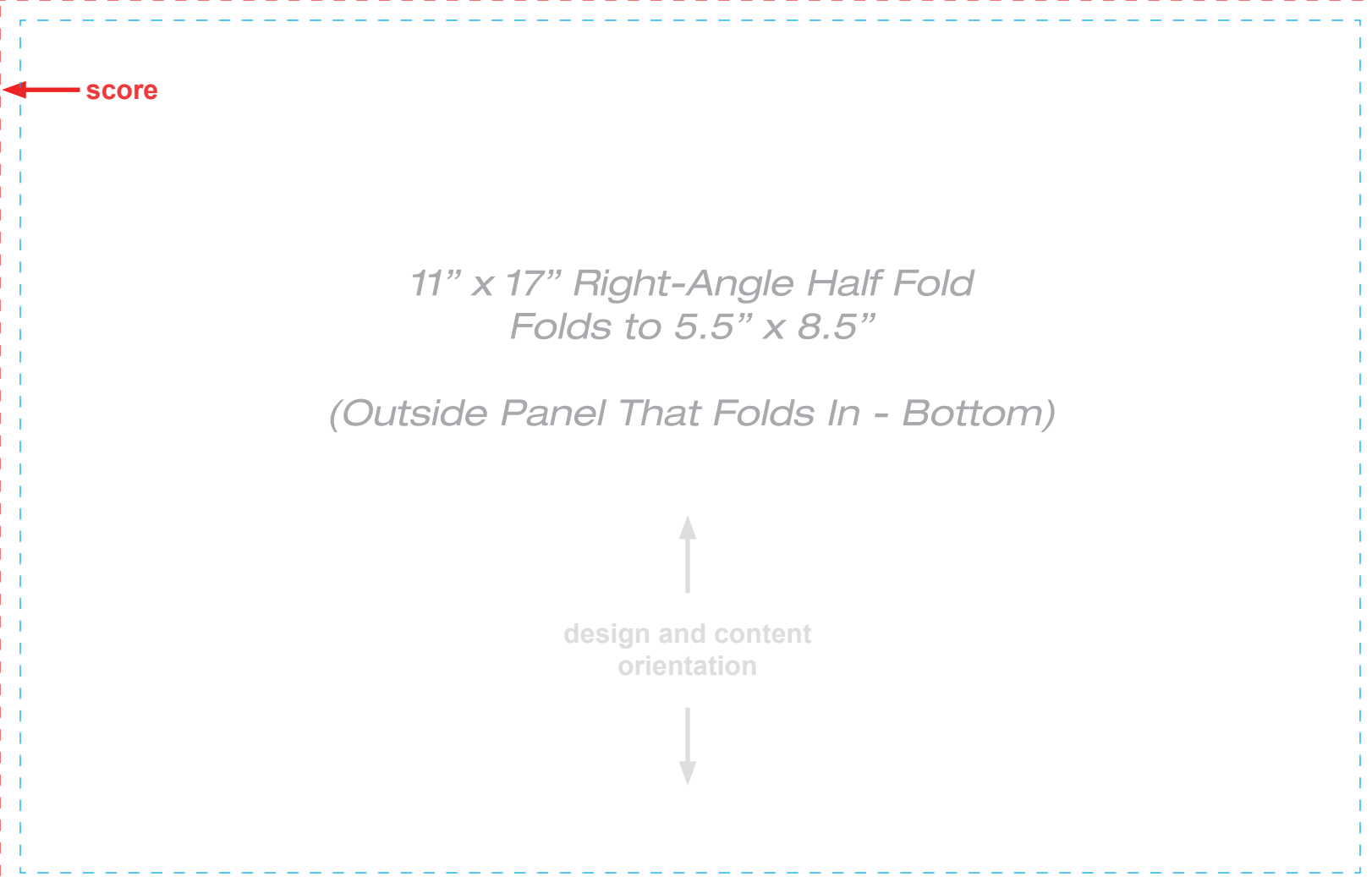
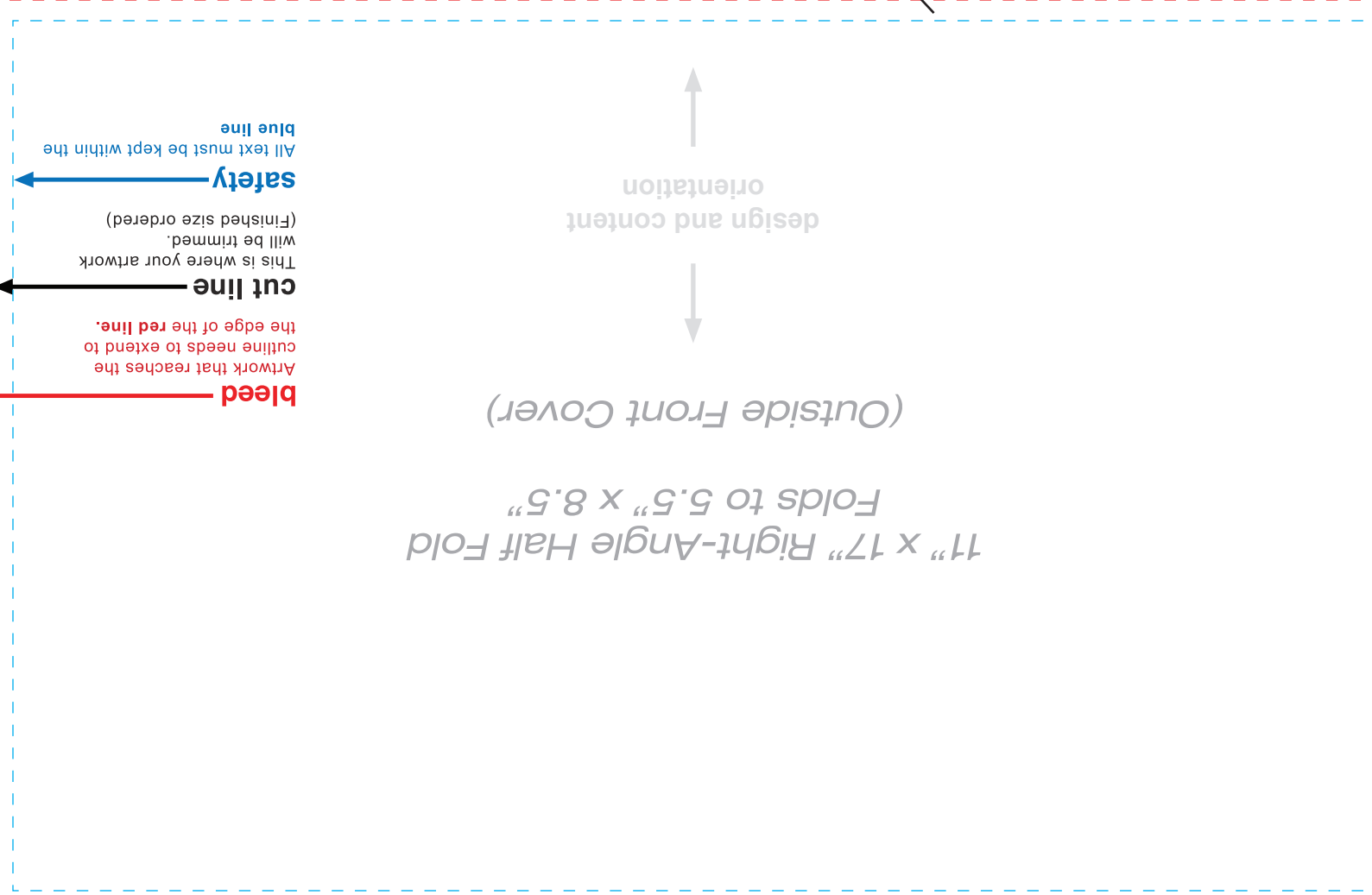
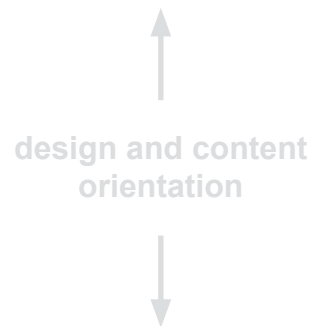


**ARTWORK WITH BORDERS**  
 Minimum border thickness must be 1/4 (0.25") thick plus the 1/8 (0.125") bleed for correct print ready artwork. Total border size from the bleed line is 3/8 (0.375"). Border example on the right.



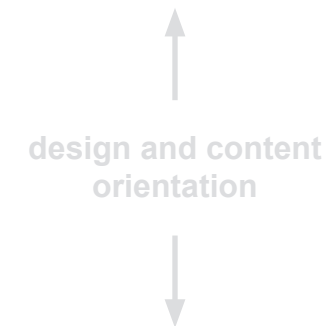
11" x 17" Right-Angle Half Fold  
Folds to 5.5" x 8.5"

(Inside Top Left)



11" x 17" Right-Angle Half Fold  
Folds to 5.5" x 8.5"

(Inside Top Right)



**bleed** → Artwork that reaches the cutline needs to extend to the edge of the red line.

**cut line** → This is where your artwork will be trimmed. (Finished size ordered)

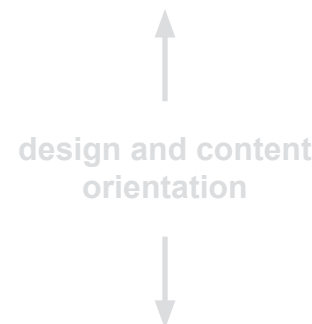
**safety** → All text must be kept within the blue line

← score

↑ score

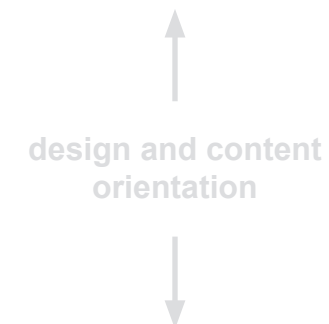
11" x 17" Right-Angle Half Fold  
Folds to 5.5" x 8.5"

(Inside Bottom Left)



11" x 17" Right-Angle Half Fold  
Folds to 5.5" x 8.5"

(Inside Bottom Right)



**ARTWORK WITH BORDERS**  
Minimum border thickness must be 1/4 (0.25") thick plus the 1/8 (0.125") bleed for correct print ready artwork. Total border size from the bleed line is 3/8 (0.375"). Border example on the left.

Please delete this guideline before submitting your design to print.